



St Michel boasts urban and mountain vistas Creating green and smart living space for residents

Hong Kong, 12 May 2023: Sun Hung Kai Properties Limited (SHKP) is handing over units at St Michel, a low-density luxury residential development in Sha Tin, to homebuyers in phases. With sweeping mountain views on one side and city views on the other, the development features a landscaped garden with unique characteristics, healthy building features and innovative smart technologies.

Supporting conservation and preserving local features

SHKP Senior Project Manager (Project Management Department) Sunny Cheung said: “St Michel is on the mid-levels of To Shek Street, Sha Tin. It is near Tate's Cairn Tunnel, Lion Rock Tunnel and the MTR Sha Tin Wai and City One stations. It is also very close to two country parks. Using the concept of Shakkei (borrowed scenery), we extended the surrounding mountain views into the project area, which now features outdoor green space totalling 30,000 square feet, including a 20,000-square-foot lawn in a big courtyard. To add a local flavour to the development, we decorated the lawn with several huge granite blocks collected at the site to echo the Chinese name of the street, *To Shek*, which means ‘many boulders’.”

Mr. Cheung also pointed out that on the side of the lawn is a precious incense tree, which is a national second-class protected species. SHKP devoted a lot of manpower and resources to preserving the tree in situ, including repositioning the residential towers and parking spaces at the early planning stage, and installing piles as deep as 17 metres around the tree to stabilize the soil during construction. These efforts now allow residents to enjoy the beauty of this very special tree and demonstrate the Group's commitment to balancing conservation and development.

St Michel has adopted various smart technologies to enhance the efficiency and quality of its property management and security service. All the entrances are equipped with an AI face-recognition system, so residents enjoy easy access to their buildings and estate facilities without the need for resident cards or keys. In addition, they will receive a notification via a mobile app if mail is put in their mailbox, and delivery staff enter and leave the buildings through designated points. Every unit comes with a tablet to replace the traditional home intercom system. Connected to the tower lobby and clubhouse reception, the tablet allows residents to check the availability of clubhouse facilities, make a booking, and manage other property-related issues anytime.

SHKP always puts people first, and pays special attention to not just building quality but also the physical and mental well-being of residents. As the Group's first residential development to receive a WELL certification from the International WELL Building Institute, St Michel uses High-Efficiency Particulate Air (HEPA) filters and Nano Confined Catalytic Oxidizer air treatment systems to improve the quality of the environment. The gymnasium in its clubhouse provides professional running training equipment, comparable to the facilities of a sports institute.

Luxury clubhouse designed by famous designer

Club Michel, the exquisite clubhouse of St Michel, designed by renowned Japanese interior design firm Strickland, has many modern aesthetic features. It offers a range of facilities, including an indoor and outdoor children's playground spreading over 7,800-plus square feet, an outdoor theatre, a tea room and an indoor swimming pool. Residents can also spend time with family and friends on the rooftop observation deck.

The low-density St Michel development has five 19-storey residential towers with a total of 335 units of saleable area, ranging from 920 to 2,504 square feet. Most units are three- to four-bedroom apartments. The rest include duplexes with a rooftop swimming pool, which is rarely seen in the market. The development also provides 364 parking spaces for residents' use.

Caption ([Link](#)):



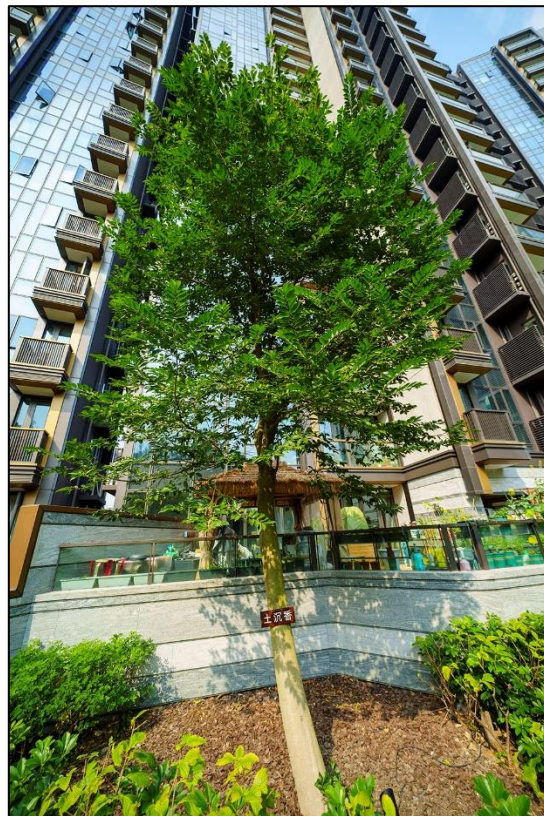
SHKP Senior Project Manager (Project Management Department) Sunny Cheung (centre), Senior Project Manager Grant Yuen (right) and Project Manager Bridgette Chui (left) say St Michel features a landscaped garden with unique characteristics, healthy building features and innovative smart technologies.



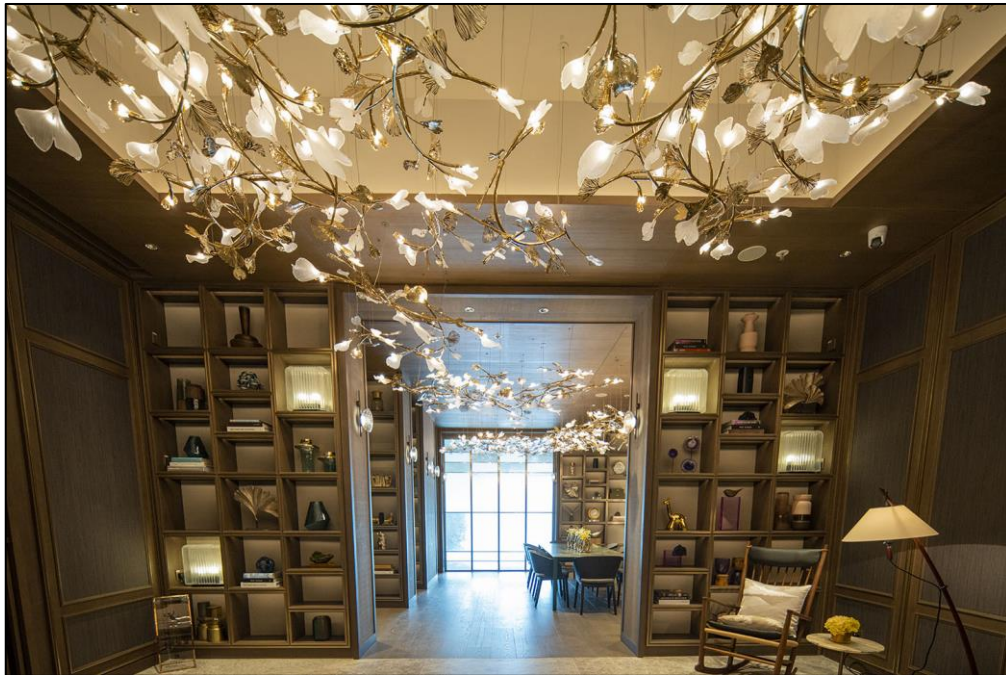
SHKP used the concept of Shakkei (borrowed scenery) to extend views of the surrounding mountains into the complex, which now features outdoor green space totalling 30,000 square feet.



St Michel is on the mid-levels of To Shek Street, Sha Tin. It is near Tate's Cairn Tunnel, Lion Rock Tunnel and the MTR Sha Tin Wai and City One stations.



SHKP installed piles as deep as 17 metres to protect the roots of this incense tree during construction. The tree is now six metres tall.





Club Michel, the clubhouse of St Michel, was designed by renowned Japanese interior design firm Strickland and has many modern aesthetic features.

###

This advertisement is published by the Vendor or by another person with the consent of the Vendor.

The photographs, images, drawings or sketches shown in this advertisement/promotional material represent an artist's impression of the development concerned only. They are not drawn to scale and/or may have been edited and processed with computerized imaging techniques. Prospective purchasers should make reference to the sales brochure for details of the development. The Vendor also advises prospective purchasers to conduct an on-site visit for a better understanding of the development site, its surrounding environment and the public facilities nearby.

Vendor: Mainco Limited

Holding companies of the Vendor: Champion Sino Holdings Limited, Time Effort Limited, Sun Hung Kai Properties Limited

Authorized Person for Phase 1 and Phase 2 of the Development: Lai Chi Leung Henry

The firm or corporation of which the Authorized Person for Phase 1 and Phase 2 of the Development is a proprietor, director or employee in his professional capacity: Archiplus International (HK) Limited

Building contractor for Phase 1 and Phase 2 of the Development: Chun Fai Construction Company Limited

The firm of solicitors acting for the owner in relation to the sale of residential properties in Phase 1 and Phase 2 of the Development: Woo Kwan Lee & Lo, Mayer Brown

Authorized institution that has made a loan, or has undertaken to provide finance, for the construction of Phase 1 and Phase 2 of the Development: The Hongkong and Shanghai Banking Corporation Limited (Note: The relevant undertakings have been cancelled.)

Any other person who has made a loan for the construction of Phase 1 and Phase 2 of the Development: Sun Hung Kai Properties Holding Investment Limited

Name of Phase 1 of the Development: Phase 1 ("Phase 1") of St Michel Development ("the Development") (Crown Tower, Queen Tower 1 and Queen Tower 2 of the residential development in Phase 1 are called "St Michel")

Name of Phase 2 of the Development: Phase 2 ("Phase 2") of St Michel Development ("the Development") (King Tower 1 and King Tower 2 of the residential development in Phase 2 are called "St Michel")

District: Shatin

Name of Street and Street Number of Phase 1 and Phase 2 of the Development: 33 To Shek Street

The website address designated by the Vendor for Phase 1 of the Development: www.stmichel.com.hk/p1

The website address designated by the Vendor for Phase 2 of the Development: www.stmichel.com.hk/p2

Prospective purchasers are advised to refer to the sales brochure for any information on the Phase. Please refer to the sales brochure for details.

Date of Production/Printing of this advertisement: 12th May, 2023
