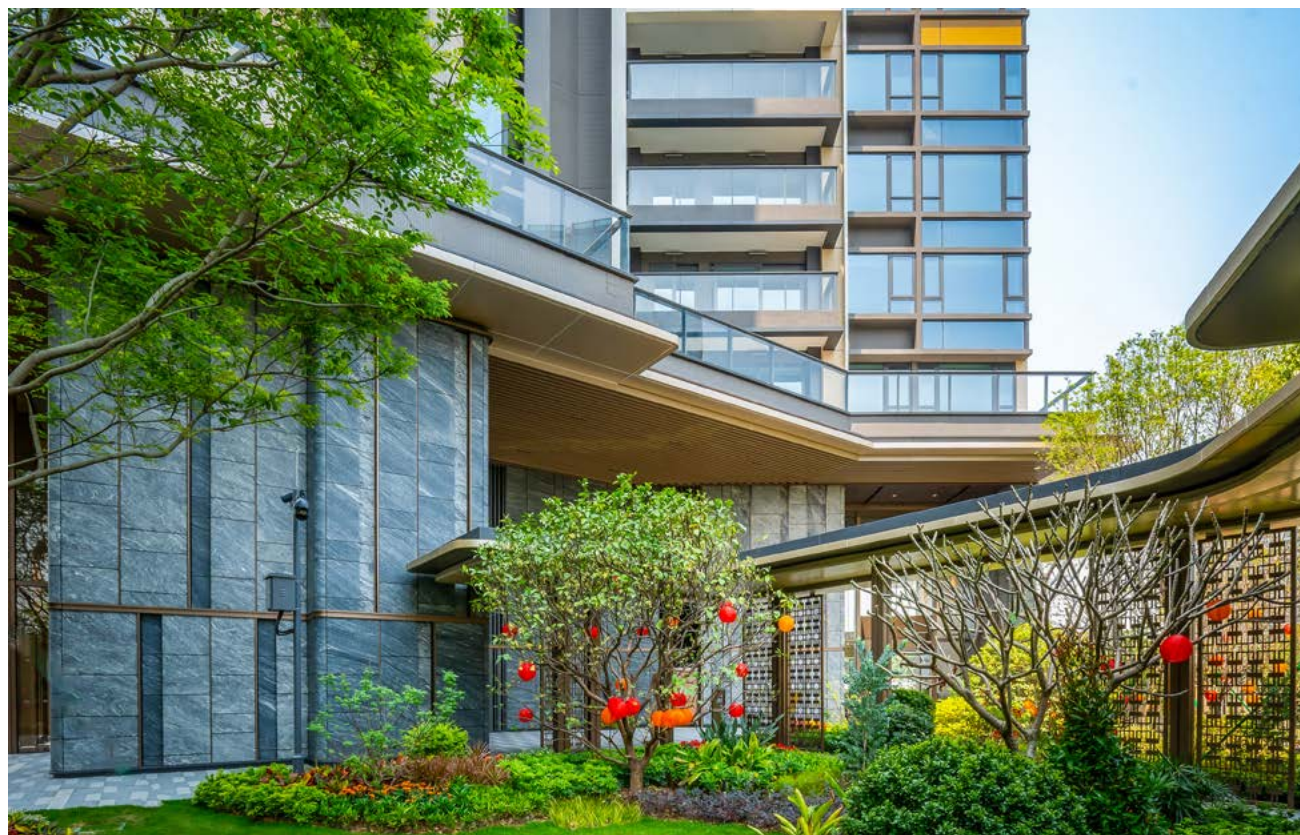




## Forest Park at Guangzhou South Station ICC completes first-phase handover

### 廣州南站ICC住宅部分峻鑾首批單位完成交樓



Forest Park, the residential portion of SHKP's wholly owned landmark Guangzhou South Station ICC, has completed the handover of its first phase of units. Set in a prime location with comprehensive amenities and an extensive transportation network, Forest Park has garnered strong market recognition for its exceptional quality.

Forest Park provides units ranging from 730 to 1,740 square feet, with two-to four-bedroom double-suite layouts. The residences are complemented by an all-encompassing clubhouse, which includes fitness zones, a 50-metre outdoor swimming pool, children's playgrounds, pets parks, banquet halls, and over 370,000 square feet of landscaped gardens, providing a premium living environment for residents of all ages.

Situated near the Guangzhou South Railway Station, Forest Park enjoys direct access to 12 railway lines, including high-speed rail, intercity and metro lines, enabling travel to Hong Kong West Kowloon in just 47 minutes. As part of continuous upgrades to the area's transportation network, the "Greater Bay Area (GBA) Line 1" intercity line connecting Zhaoqing, Foshan, Guangzhou, Dongguan and Huizhou commenced service last year, offering Forest Park residents the convenience of the GBA's one-hour living circle.

From high-quality building materials to meticulous property management, SHKP continues to pursue excellence in every detail. The Group also carefully considers the needs of different age groups in its public space design to provide all residents with enhanced quality of life.



由新地全資發展的大型地標綜合項目廣州環球貿易廣場（廣州南站ICC），其住宅部分峻鑾坐擁優越配套及交通優勢，首批單位早前已完成交付，質素備受市場認可。

峻鑾提供面積約730平方呎至1,740平方呎的兩至四房雙套房單位。項目會所設施齊全，擁有健身空間、50米戶外泳池、兒童玩樂區、寵物樂園、宴會廳以及逾370,000平方呎園林美景等，為住戶提供優越生活環境。

項目位處廣州南站核心區，享有高效便捷的交通網絡，直通12條包括高鐵、城際和地鐵的鐵路線，往來香港西九龍最快只需約47分鐘。廣州南站區內交通線路陸續升級，串聯肇慶、佛山、廣州、東莞、惠州五城的「大灣區1號線」城際線已於去年全線通車，讓住戶盡享大灣區一小時生活圈的便利。

新地在建築材料以至物業管理方面均著重細節，設計公共空間時亦充分考慮到不同年齡層的需要，力求為住客提供更好的生活品質。

