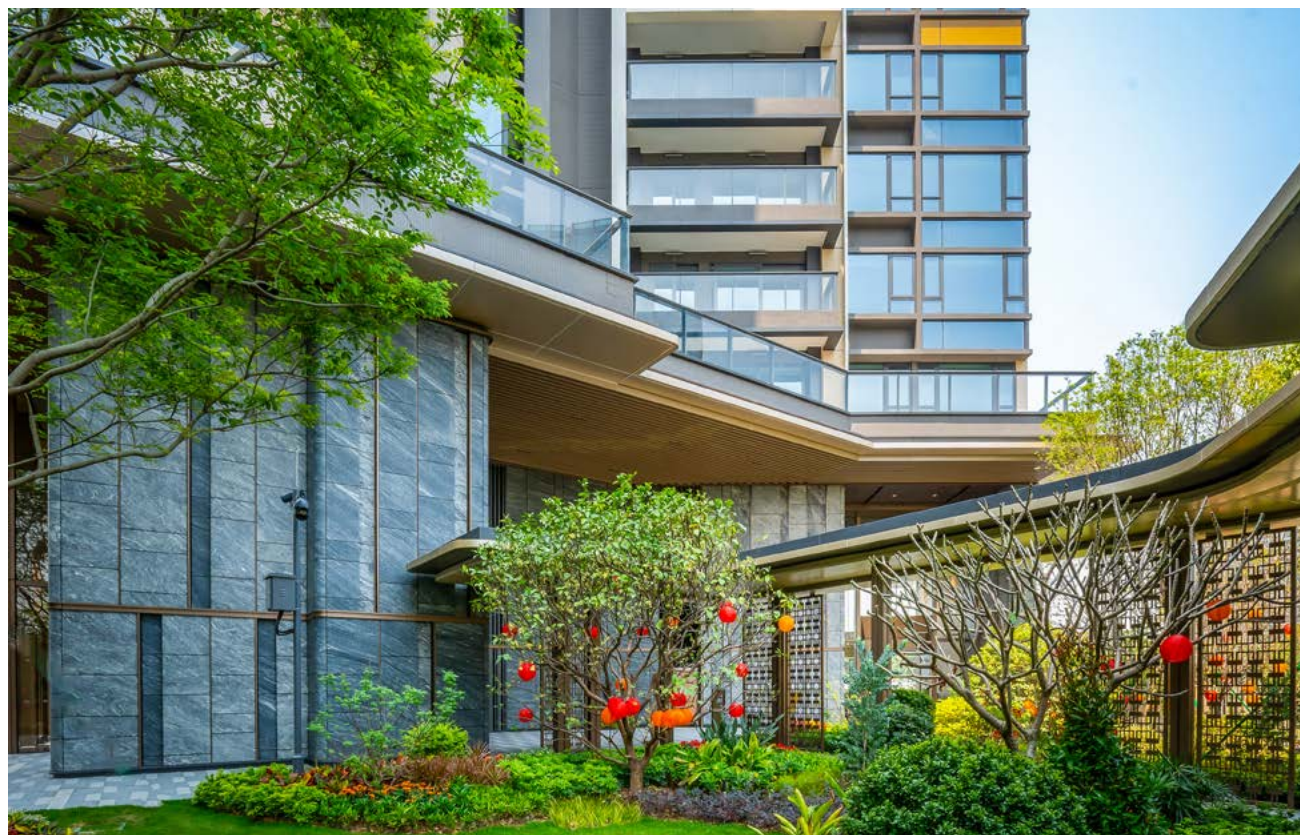




## Forest Park at Guangzhou South Station ICC completes first-phase handover

## 广州南站ICC住宅部分峻玺首批单位完成交楼

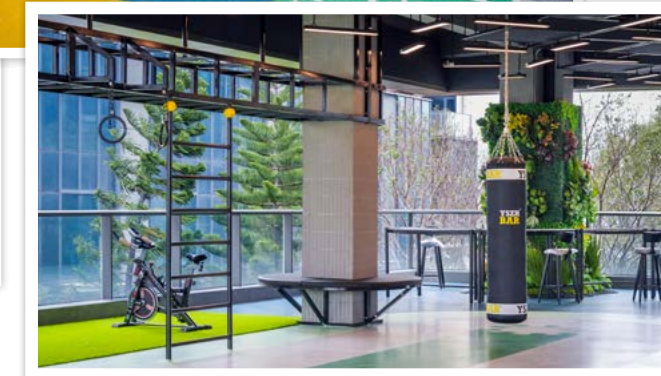


**F**orest Park, the residential portion of SHKP's wholly owned landmark Guangzhou South Station ICC, has completed the handover of its first phase of units. Set in a prime location with comprehensive amenities and an extensive transportation network, Forest Park has garnered strong market recognition for its exceptional quality.

Forest Park provides units ranging from 730 to 1,740 square feet, with two-to four-bedroom double-suite layouts. The residences are complemented by an all-encompassing clubhouse, which includes fitness zones, a 50-metre outdoor swimming pool, children's playgrounds, pets parks, banquet halls, and over 370,000 square feet of landscaped gardens, providing a premium living environment for residents of all ages.

Situated near the Guangzhou South Railway Station, Forest Park enjoys direct access to 12 railway lines, including high-speed rail, intercity and metro lines, enabling travel to Hong Kong West Kowloon in just 47 minutes. As part of continuous upgrades to the area's transportation network, the "Greater Bay Area (GBA) Line 1" intercity line connecting Zhaoqing, Foshan, Guangzhou, Dongguan and Huizhou commenced service last year, offering Forest Park residents the convenience of the GBA's one-hour living circle.

From high-quality building materials to meticulous property management, SHKP continues to pursue excellence in every detail. The Group also carefully considers the needs of different age groups in its public space design to provide all residents with enhanced quality of life.



**由**新地全资发展的大型地标综合项目广州环球贸易广场（广州南站ICC），其住宅部分峻玺坐拥优越配套及交通优势，首批单位日前已完成交付，品质备受市场认可。

峻玺提供面积约70平方米（730平方呎）至160平方米（1,740平方呎）的两至四房双套房单位。项目会所设施齐全，拥有健身空间、50米户外泳池、儿童玩乐区、宠物乐园、宴会厅以及逾34,000平方米（370,000平方呎）园林美景等，为住户提供优越生活环境。

项目位处广州南站核心区，享有高效便捷的交通网络，直通12条包括高铁、城际和地铁的铁路线，往来香港西九龙最快只需约47分钟。广州南站区内交通线路陆续升级，串联肇庆、佛山、广州、东莞、惠州五城的“大湾区1号线”城际线已于去年全线通车，让住户尽享大湾区一小时生活圈的便利。

新地在建筑材料以至物业管理方面均注重细节，设计公共空间时也充分考虑到不同年龄层的需要，力求为住客提供更好的生活品质。

