

TOWNPLACE WEST KOWLOON launches short-stay hotel service in addition to its long-term apartment leasing

TOWNPLACE WEST KOWLOON 繼長租公寓租賃後推出短租酒店服務



Residents can enjoy an extraordinary view of the sea and stars from the rooftop "SKYBOUND POOL".
住客可於天台的無邊際泳池「SKYBOUND POOL」欣賞海景與天際繁星

TOWNPLACE WEST KOWLOON, the all-new seafront flagship development in West Kowloon under the Group's flexible leasing brand, TOWNPLACE, has leased the first two batches of 285 units, after receiving an overwhelming response from the market. Its tenants include young local professionals, visitors to Hong Kong under the Top Talent Pass Scheme, and overseas and domestic students who have come to Hong Kong to study. In addition to its long-term apartment leasing, TOWNPLACE WEST KOWLOON announced the launch of a short-stay hotel service to provide young professionals who visit Hong Kong for business or short trips with a fully-furnished apartment, flexible leasing options and premium hotel service. The project is currently offering both short-stay hotel service and long-term apartment leasing.

Design aesthetics create a personalized space

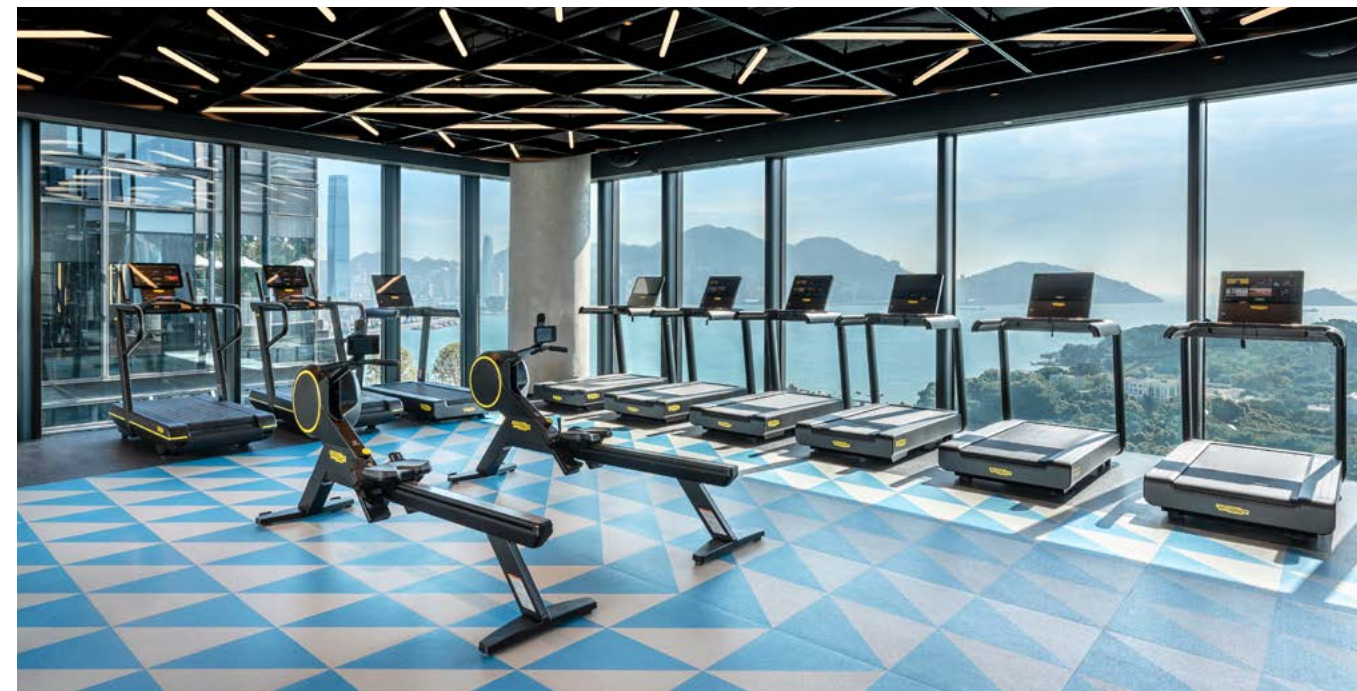
TOWNPLACE WEST KOWLOON operates using the innovative Aparthotel hybrid short- and long-term leasing model, enabling residents to choose a flexible rental period on daily, monthly or yearly basis to meet their various living needs. The 843-unit TOWNPLACE WEST KOWLOON has been launched in phases, offering studio to three-bedroom units, with unit sizes ranging from about 243 to 860 square feet. All units were

designed by world-renowned and top Hong Kong architectural firms, with both aesthetics and practicality in mind.

The project's primary studio units demonstrate a highly efficient use of space. The design team constructed a variety of layouts for the studio units ingeniously, featuring furniture and multi-functional vertical storage space to create flexible and versatile living spaces. It provides high-quality smart homes to meet the needs of young residents (TOWNERS).

TP SOCIAL CLUB designed exclusively for residents

TOWNPLACE WEST KOWLOON is home to TP SOCIAL CLUB, a nearly 53,000-square-foot exclusive area where connecting residents work and play together for a "Bleisure" lifestyle. The Club has excellent facilities and social areas, including the "SKYBOUND POOL", with breath-taking views of Victoria Harbour, fully equipped indoor and outdoor gyms "BEAST STUDIO" and "MINDFUL", co-working space "THINK TANK", socializing spot "HIGH BAR", and shared kitchen "FLAVOUR LOUNGE" and "FURRY LANE" for pets. Each space provides an inspiring and exciting living experience.



"BEAST STUDIO", a commercial grade gym, supports the fitness goals of every resident
重量訓練室「BEAST STUDIO」擁有商業級的設備和配套助住客實現各種運動目標

集團旗下坐落西九的「TOWNPLACE WEST KOWLOON」，為轄下靈活租住品牌「TOWNPLACE 本舍」之全新臨海項目，首兩批共285個單位自推出以來已悉數租出，深受市場歡迎，租客包括本地年輕才俊、透過「高才通計劃」來港人士，以及來港升學的海外留學生等。項目繼長租公寓租賃後推短租酒店服務，來港出差公幹或短途旅行的年輕才俊皆可拎包入住，租期靈活，隨時即享高質酒店服務。項目現時長短租均持續推出接受租賃。

設計美學營造個性化空間

「TOWNPLACE WEST KOWLOON」採取創新性「Aparthotel」長短租賃混合模式營運，住客可靈活選擇日、月或年計的彈性租期，滿足不同居住需要。項目合共提供843個單位，戶型涵蓋開放式至三房，單位面積由約243至860平方呎不等，所有單位均由國際著名和香港知名建築設計公司打造，空間設計兼具美學與實用性。

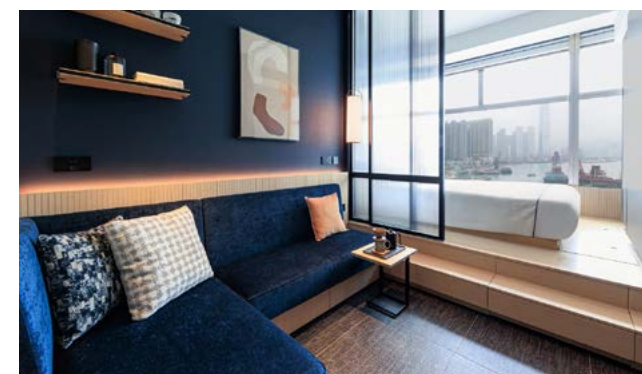
項目主打的開放式單位演繹了空間的極致運用，設計團隊為開放式單位構建多款不同間隔，巧妙運用傢俱擺位與多功能垂直收納空間等方法，締造靈活多變的功能居住空間，搭配高品質智能家居，迎合新世代住客 (TOWNERS) 的生活和工作所需。

打造住客專屬的「TP SOCIAL CLUB」

項目特設覆蓋面積近53,000平方呎、融合商務及社交乘式生活方式的「TP SOCIAL CLUB」，所有住客可享專屬通行。項目設有優越設施和社交空間，例如可俯瞰維港的天台無邊際泳池「SKYBOUND POOL」、設備齊全的商業級室內與室外健身室—重量訓練室「BEAST STUDIO」及輕量訓練室「MINDFUL」，以及共享工作間「THINK TANK」、聚會空間「HIGH BAR」、共享廚房「FLAVOUR LOUNGE」和寵物空間「FURRY LANE」等，為住客的生活注入活力與靈感。



"Flavour Lounge", an ideal venue to cook up a storm for yourself or for friends using high-end kitchen supplies
「共享廚房」配備高級廚房用品，讓您或好友盡享烹飪樂趣的理想場地



TOWNPLACE WEST KOWLOON meets the exquisite tastes of discerning residents
「TOWNPLACE WEST KOWLOON」致力滿足不同住客的高品味需求