

TOWNPLACE WEST KOWLOON launches short-stay hotel service in addition to its long-term apartment leasing

TOWNPLACE WEST KOWLOON 继长租公寓租赁后推出短租酒店服务



Residents can enjoy an extraordinary view of the sea and stars from the rooftop "SKYBOUND POOL".
住客可于天台的无边际泳池 "SKYBOUND POOL" 欣赏海景与天际繁星

TOWNPLACE WEST KOWLOON, the all-new seafront flagship development in West Kowloon under the Group's flexible leasing brand, TOWNPLACE, has leased the first two batches of 285 units, after receiving an overwhelming response from the market. Its tenants include young local professionals, visitors to Hong Kong under the Top Talent Pass Scheme, and overseas and domestic students who have come to Hong Kong to study. In addition to its long-term apartment leasing, TOWNPLACE WEST KOWLOON announced the launch of a short-stay hotel service to provide young professionals who visit Hong Kong for business or short trips with a fully-furnished apartment, flexible leasing options and premium hotel service. The project is currently offering both short-stay hotel service and long-term apartment leasing.

Design aesthetics create a personalized space

TOWNPLACE WEST KOWLOON operates using the innovative Aparthotel hybrid short- and long-term leasing model, enabling residents to choose a flexible rental period on daily, monthly or yearly basis to meet their various living needs. The 843-unit TOWNPLACE WEST KOWLOON has been launched in phases, offering studio to three-bedroom units, with unit sizes ranging from about 243 to 860 square feet. All units were

designed by world-renowned and top Hong Kong architectural firms, with both aesthetics and practicality in mind.

The project's primary studio units demonstrate a highly efficient use of space. The design team constructed a variety of layouts for the studio units ingeniously, featuring furniture and multi-functional vertical storage space to create flexible and versatile living spaces. It provides high-quality smart homes to meet the needs of young residents (TOWNERS).

TP SOCIAL CLUB designed exclusively for residents

TOWNPLACE WEST KOWLOON is home to TP SOCIAL CLUB, a nearly 53,000-square-foot exclusive area where connecting residents work and play together for a "Bleisure" lifestyle. The Club has excellent facilities and social areas, including the "SKYBOUND POOL", with breath-taking views of Victoria Harbour, fully equipped indoor and outdoor gyms "BEAST STUDIO" and "MINDFUL", co-working space "THINK TANK", socializing spot "HIGH BAR", and shared kitchen "FLAVOUR LOUNGE" and "FURRY LANE" for pets. Each space provides an inspiring and exciting living experience.



"BEAST STUDIO", a commercial grade gym, supports the fitness goals of every resident
重量训练室 "BEAST STUDIO" 拥有商业级的设备和配套助住客实现各种运动目标

集团旗下坐落西九的 "TOWNPLACE WEST KOWLOON", 为旗下灵活租住品牌 "TOWNPLACE 本舍" 的全新临海项目, 首两批共 285 个单位自推出以来已悉数租出, 深受市场欢迎, 租客包括本地青年才俊、通过 "高才通计划" 来港人士, 以及来港升学的海外留学生等。项目继长租公寓租赁后推短租酒店服务, 来港出差公干或短途旅行的青年才俊皆可拎包入住, 租期灵活, 随时即享高品质酒店服务。项目现时长短租均持续推出接受租赁。

设计美学营造个性化空间

"TOWNPLACE WEST KOWLOON" 采取创新性 "Aparthotel" 长短租赁混合模式营运, 住客可灵活选择日、月或年计的弹性租期, 满足不同居住需要。项目总共提供 843 个单位, 户型涵盖开放式至三房, 单位面积由约 22.6 至 80 平方米 (243 至 860 平方呎) 不等, 所有单位均由国际著名和香港知名建筑设计公司打造, 空间设计兼具美学与实用性。

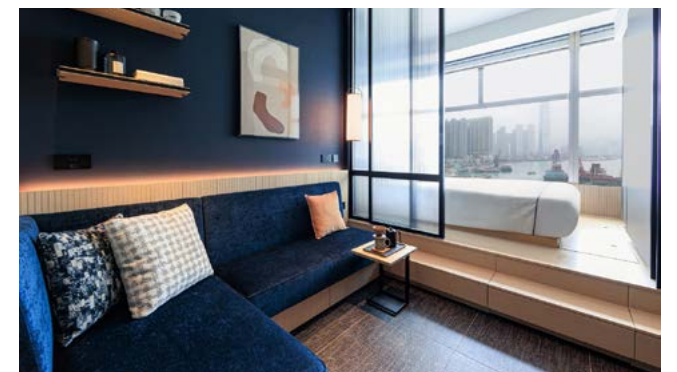
项目主打的开放式单位演绎了空间的极致运用, 设计团队为开放式单位构建多款不同户型, 巧妙运用家具摆位与多功能垂直收纳空间等方法, 缔造灵活多变的功能居住空间, 搭配高品质智能家居, 迎合新世代住客 (TOWNERS) 的生活和工作所需。

打造住客专属的 "TP SOCIAL CLUB"

项目特设覆盖面积近 4923.7 平方米 (53,000 平方呎)、融合商务及社交交叉式生活方式的 "TP SOCIAL CLUB", 所有住客可享专属通行。项目设有优越设施和社交空间, 例如可俯瞰维港的天台无边际泳池 "SKYBOUND POOL"、设备齐全的商业级室内与室外健身室——重量训练室 "BEAST STUDIO" 及轻量训练室 "MINDFUL", 以及共享工作间 "THINK TANK"、聚会空间 "HIGH BAR"、共享厨房 "FLAVOUR LOUNGE" 和宠物空间 "FURRY LANE" 等, 为住客的生活注入活力与灵感。



"Flavour Lounge", an ideal venue to cook up a storm for yourself or for friends using high-end kitchen supplies
"共享厨房" 配备高级厨房用品, 让您或好友尽享烹饪乐趣的理想场地



TOWNPLACE WEST KOWLOON meets the exquisite tastes of discerning residents
"TOWNPLACE WEST KOWLOON" 致力满足不同住客的高品味需求