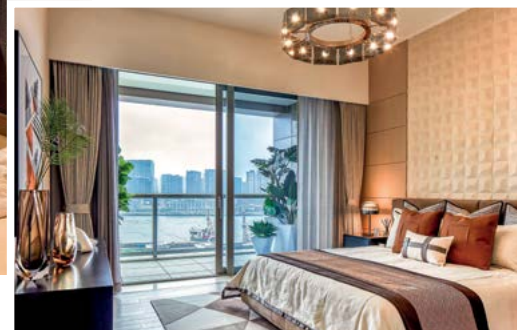




All units in Shanghai Arch Phase 2 have a balcony facing the river and a smart home system
濱江凱旋門二期戶戶設有朝江陽台，兼備智能家居系統



18 Completion of luxury residences in Shanghai Arch Phase 2 in Shanghai 上海豪華住宅濱江凱旋門二期交樓

Shanghai Arch, the Group's luxury residential development in the Shanghai Lujiazui central business district, will provide about 1.5 million square feet of residences in three phases. Shanghai Arch Phase 2 was completed in March 2021, with owners taking possession of their new units. During handover, the Group provided thoughtful presents and excellent service. The property management company had a professional handover team go through the property inspection process with the new owners. The owners were very delighted with their superb new homes and premium facilities, as well as the attentive, caring property management service.

A direct view of the Huangpu River from a prime location

Shanghai Arch is nestled on Pu Ming Road, which is a traditional luxury neighbourhood with convenient access. The overall development has a fan-shaped layout to maximize the magnificent view of the Huangpu River and the famous historical buildings along the Bund. The development features premium construction materials and top-notch facilities to provide a discerning lifestyle, setting a new standard for luxury residences in the city.

Refined living with upgraded facilities

Located in the centre of the development, Shanghai Arch Phase 2 is surrounded by scenic landscapes to the north and south, generating a comfortable ambience. Phase 2 provides 175

residential units, with typical units ranging from about 1,464 to 2,637 square feet. Sky penthouses and special garden units are also available.

The residential units feature well thought out facilities, including a number of equipment upgrades, providing a more refined lifestyle for discerning residents. The master bedrooms have walk-in wardrobes for added luxury. The air-conditioners have PM2.5 (fine suspended particulates) filters to ensure good indoor air quality. Whole-house water-softener systems help safeguard residents' well-being. And water underfloor heating has been adopted for extra comfort.

The kitchens complement the luxury residences with complimentary top

international brands of kitchen electrical appliances, dishwashers, kitchen cabinets and wine cellars. In addition, all residential units have a smart home system. The WiFi network reaches every corner of the units, providing convenient Internet access.

Prestigious private clubhouse

Shanghai Arch features an 86,000-square-foot riverside clubhouse. Created by a renowned interior designer, the clubhouse provides a wide range of luxury facilities for fitness, leisure and banquets, including a heated swimming pool with a skylight glass dome roof, spa rooms, river view banquet rooms, a kick-boxing room, an indoor multi-purpose sports hall, a snooker room, a karaoke room, a piano room, a children's playground and an outdoor rooftop garden.

濱江凱旋門為集團在上海陸家嘴中央商務區的豪華住宅發展項目，分三期發展，共提供約150萬平方呎的住宅樓面。濱江凱旋門二期於今年三月落成，業主現正陸續收樓。集團在交樓期間提供貼心的禮物和優質服務，而物業管理公司則派出專業交樓小組陪伴業主檢查物業。業主對卓越的物業質素和設施，以及殷勤體貼的物業管理服務感到非常滿意。

黃金地段 一線江景

濱江凱旋門位於浦明路，屬傳統豪宅區，交通便利。發展項目整體規劃以扇形設計，務求盡收黃浦江一線江景及外灘沿岸著名歷史建築的美景。項目選用優質建築材料，配套設施卓越，帶出高級生活品味，為市內的豪華住宅訂下新標準。

品味生活 升級配置

濱江凱旋門二期位於項目核心位置，南北均有花園圍繞，環境舒適宜人。二期共提供175個住宅單位。標準單位面積由約1,464至2,637平方呎，另設有頂層天際屋和特色花園單位。

住宅單位配套細心體貼，當中包括多個升級配置，為住客帶來更優質的品味生活。主人房配置步入式衣櫃，充分體現豪宅氣派。冷氣機具備PM2.5（微細懸浮粒子）過濾功能，有效保障室內空氣質素。全屋設有軟水系統，貼心照顧住客健康。地暖採用水暖系統，更添舒適。

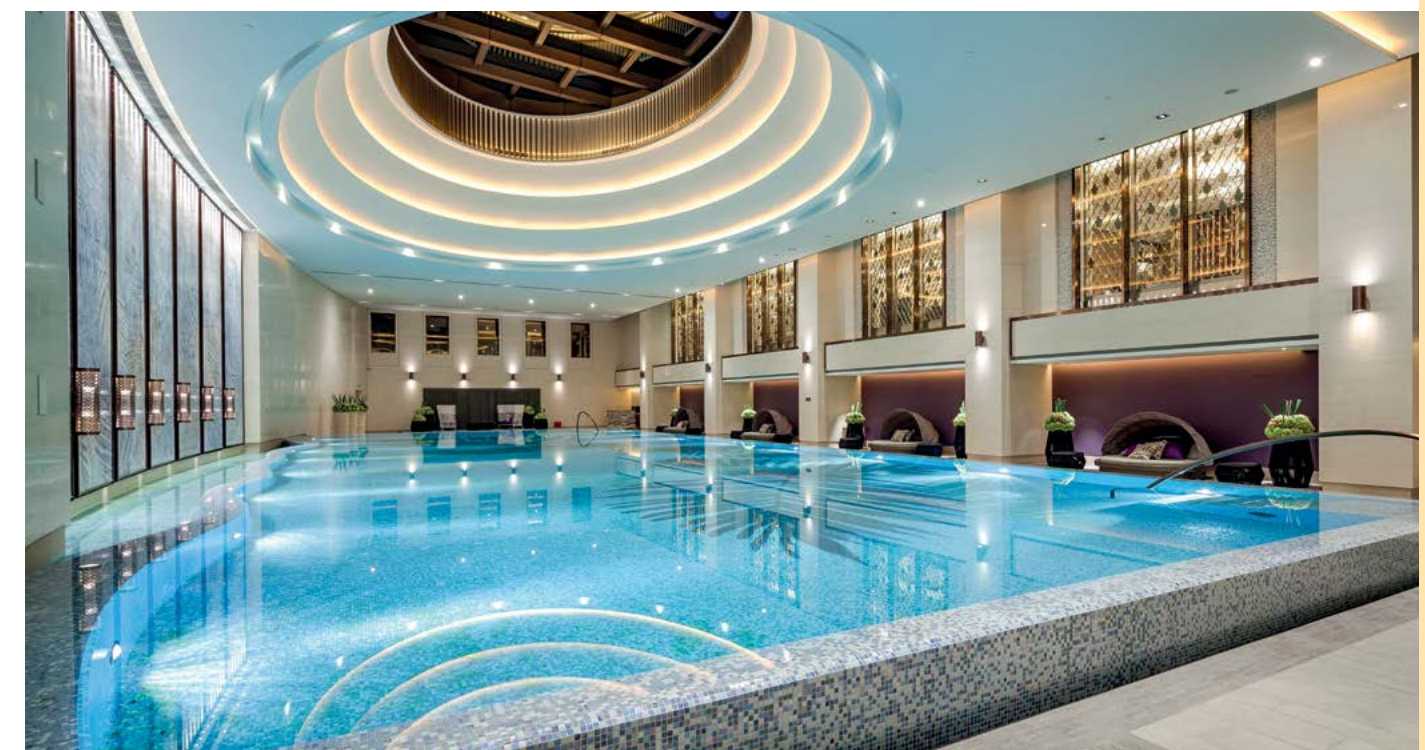


Residents can enjoy sweating in the kick-boxing room
住客可在拳擊健身房盡情揮灑汗水

廚房貫徹豪宅風範，附送國際頂級品牌廚房電器、洗碗機、廚櫃及酒櫃。另外，所有住宅單位配備智能家居系統，WiFi網絡全面覆蓋單位內每個角落，上網加倍方便。

尊貴私人會所

濱江凱旋門坐擁86,000平方呎大型臨江會所，由著名室內設計師主理。會所提供豪華配套設施，全面滿足健身、休閒及宴客等不同需要。多元化設施包括設有穹頂天窗的恆溫泳池、水療室、江景宴會廳、拳擊健身房、室內多用途球場、桌球室、卡拉OK室、鋼琴房、兒童遊樂室及頂層室外花園等。



The heated swimming pool in the Shanghai Arch private clubhouse has a skylight glass dome roof
濱江凱旋門私人會所設有穹頂天窗的恆溫泳池