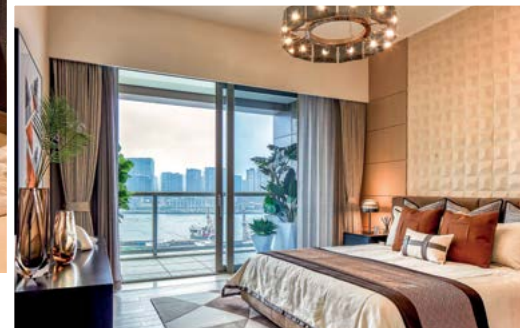




All units in Shanghai Arch Phase 2 have a balcony facing the river and a smart home system
滨江凯旋门二期户户设有朝阳阳台，兼备智能家居系统



Completion of luxury residences in Shanghai Arch Phase 2 in Shanghai 上海豪华住宅滨江凯旋门二期交楼

Shanghai Arch, the Group's luxury residential development in the Shanghai Lujiazui central business district, will provide about 140,000 square metres (1.5 million square feet) of residences in three phases. Shanghai Arch Phase 2 was completed in March 2021, with owners taking possession of their new units. During handover, the Group provided thoughtful presents and excellent service. The property management company had a professional handover team go through the property inspection process with the new owners. The owners were very delighted with their superb new homes and premium facilities, as well as the attentive, caring property management service.

A direct view of the Huangpu River from a prime location

Shanghai Arch is nestled on Pu Ming Road, which is a traditional luxury neighbourhood with convenient access. The overall development has a fan-shaped layout to maximize the magnificent view of the Huangpu River and the famous historical buildings along the Bund. The development features premium construction materials and top-notch facilities to provide a discerning lifestyle, setting a new standard for luxury residences in the city.

Refined living with upgraded facilities

Located in the centre of the development, Shanghai Arch Phase 2 is surrounded by scenic landscapes to the north and south, generating a comfortable ambience. Phase 2 provides 175

residential units, with typical units ranging from 136 to 245 square metres (about 1,464 to 2,637 square feet). Sky penthouses and special garden units are also available.

The residential units feature well thought out facilities, including a number of equipment upgrades, providing a more refined lifestyle for discerning residents. The master bedrooms have walk-in wardrobes for added luxury. The air-conditioners have PM2.5 (fine suspended particulates) filters to ensure good indoor air quality. Whole-house water-softener systems help safeguard residents' well-being. And water underfloor heating has been adopted for extra comfort.

The kitchens complement the luxury residences with complimentary top

international brands of kitchen electrical appliances, dishwashers, kitchen cabinets and wine cellars. In addition, all residential units have a smart home system. The WiFi network reaches every corner of the units, providing convenient Internet access.

Prestigious private clubhouse

Shanghai Arch features an 8,000-square-metre (86,000-square-foot) riverside clubhouse. Created by a renowned interior designer, the clubhouse provides a wide range of luxury facilities for fitness, leisure and banquets, including a heated swimming pool with a skylight glass dome roof, spa rooms, river view banquet rooms, a kick-boxing room, an indoor multi-purpose sports hall, a snooker room, a karaoke room, a piano room, a children's playground and an outdoor rooftop garden.

滨江凯旋门为集团在上海陆家嘴中央商务区的豪华住宅发展项目，分三期发展，共提供约140,000平方米（150万平方呎）的住宅楼面。滨江凯旋门二期于今年三月落成，业主现正陆续收楼。集团在交楼期间提供贴心的礼物和优质服务，而物业管理公司则派出专业交楼小组陪伴业主检查物业。业主对卓越的物业品质和设施，以及细心体贴的物业管理服务感到非常满意。

黄金地段 一线江景

滨江凯旋门位于浦明路，属传统豪宅区，交通便利。发展项目整体规划以扇形设计，务求尽收黄浦江一线江景及外滩沿岸著名历史建筑的美景。项目选用优质建筑材料，配套设施卓越，彰显高级生活品味，为市内的豪华住宅树立新标准。

品味生活 升级配置

滨江凯旋门二期位于项目核心位置，南北均有花园围绕，环境舒适宜人。二期共提供175个住宅单位。标准单位面积由136至245平方米（约1,464至2,637平方呎），另设有顶层天际屋和特色花园单位。

住宅单位配套细心体贴，其中包括多个升级配置，为住户带来更优质的品味生活。主人房配置步入式衣柜，充分体现豪宅气派。空调具备PM2.5（微细悬浮粒子）过滤功能，有效保障室内空气质量。全屋设有软水系统，贴心照顾住户健康。地暖采用水暖系统，更添舒适。

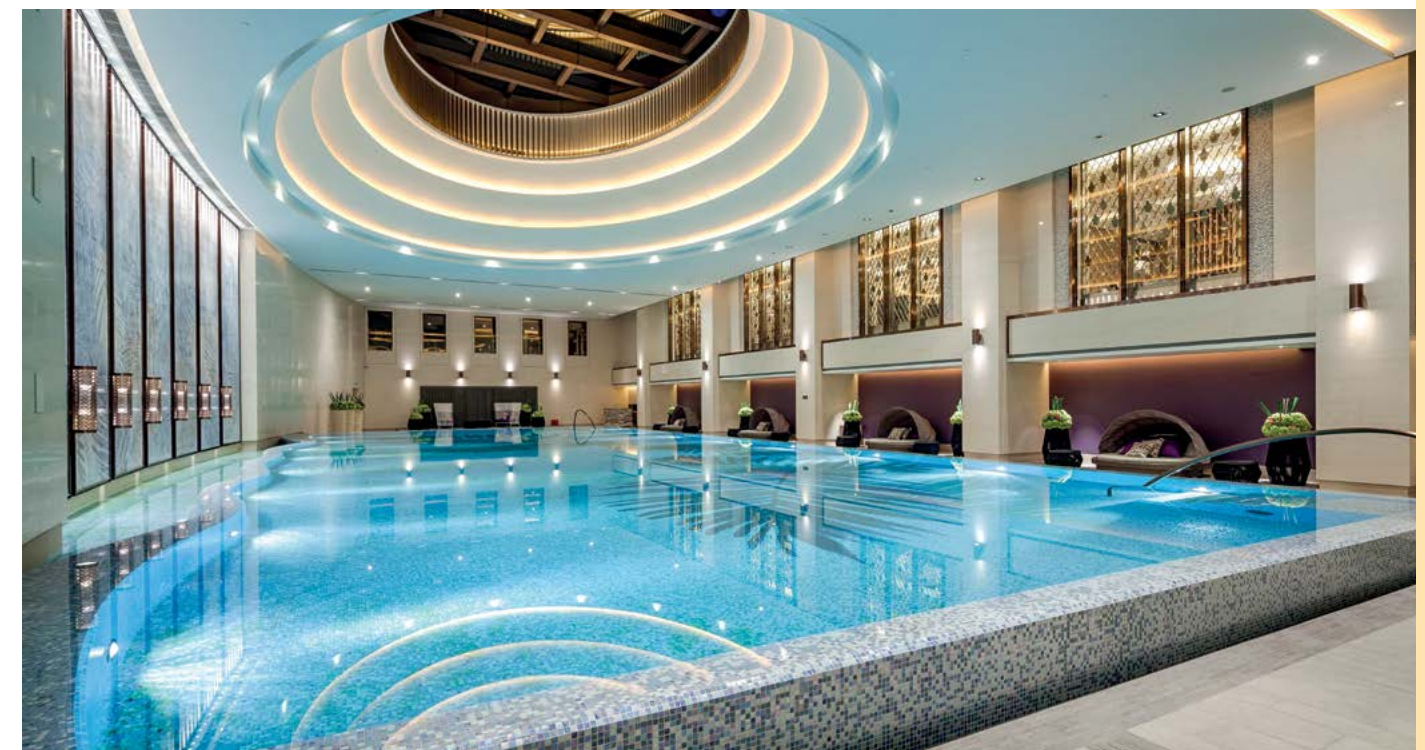


Residents can enjoy sweating in the kick-boxing room
住户可在拳击健身房尽情挥洒汗水

厨房贯彻豪宅风范，附送国际顶级品牌厨房电器、洗碗机、厨柜及酒柜。另外，所有住宅单位配备智能家居系统，WiFi网络全面覆盖单位内每个角落，上网加倍方便。

尊贵私人会所

滨江凯旋门坐拥8,000平方米（86,000平方呎）大型临江会所，由著名室内设计师主理。会所提供豪华配套设施，全面满足健身、休闲及宴客等不同需求。多元化设施包括设有穹顶天窗的恒温泳池、水疗室、江景宴会厅、拳击健身房、室内多功能球场、桌球室、卡拉OK室、钢琴房、儿童游乐室及顶层室外花园等。



The heated swimming pool in the Shanghai Arch private clubhouse has a skylight glass dome roof
滨江凯旋门私人会所设有穹顶天窗的恒温泳池